



# OPENTOUCH SUITE FOR SMB

Simplify your communications  
and maximize your business

Alcatel·Lucent   
Enterprise

# POWERFUL COMMUNICATION SERVER

## OmniPCX® Office Rich Communication Edition (RCE )

Flexible communication server for small and medium-sized enterprises



OmniPCX Office  
RCE Compact



OmniPCX Office  
RCE Small



OmniPCX Office  
RCE Medium



OmniPCX Office  
RCE Large

### OmniPCX Office RCE Compact

- Wall-mounted cabinet
- Fanless design
- For 6 to 18 digital/analog users
- For up to 200 IP users

### 19-inch cabinet

Modular design for optimal expandability:

### OmniPCX Office RCE Small

- CPU slot + 2 universal slots

### OmniPCX Office RCE Medium

- CPU slot + 5 universal slots

### OmniPCX Office RCE Large

- CPU slot + 8 slots (4 are universal)

All platforms are equipped with a high-performance PowerCPU Extended Edition and 16 VoIP channels, as well as a MSDB 8-GB memory card. Therefore, no hard disk is required anymore.

### Features directly embedded

- Personal assistant
- 10 minutes customized music on hold and 4 system languages
- Voicemail and user mailbox greeting with 2 ports and 60 minutes of voice mail storage
- PIMphony™ basic for all users
- Unified Instant Messaging
- LDAP support for universal access embedded now on OTCV, Premium DeskPhones, My IC Phone®, My IC Web for Office and PIMphony Touch

### Additional options

- Mobile and collaborative applications
- Automated Attendant (AA), Multiple AA (MLAA)
- SIP and CTI Openness
- SIP trunking
- Smart Call Routing
- Call Center Office

# WIRELINE PHONES

## Premium DeskPhones with IP and digital connectivity

Innovative designed sets for professional IP or digital telephony



8068 BT



8068



8038/8039



8028/8029

- Superlative voice quality
- Optimized ergonomics, Navigator, Intuitive icons and soft keys
- Dedicated function keys
- Backlit Display
- Alphabetic keyboard
- Build-in security

### IP Desktop Softphone

8068 emulation with VoIP



- On PC, Mac, tablets, iPad, and smartphones
- With virtual add-on module

### 8082 My IC Phone

Smart DeskPhone for executives



- 7-inch screen with graphical display
- Capacitive touch-screen
- Wide-band audio quality
- Bluetooth handset
- Peer to peer video capabilities

### OmniTouch® 4135 IP Conference Phone



A SIP-based plug-and play-audio conferencing phone with up to 4 simultaneous connections

### Specific for IP:

- Wideband audio quality

### Accessories:

- Premium Add-ons Modules
- Comfort & Bluetooth® Handset
- Monaural, Binaural and Bluetooth Headset
- Premium Wall Mounting Kit
- Audiooffice Conference Modules



8115



8125

### 8001/8012 DeskPhone

To address the low end SIP market



- SIP based features such as call log, conference in local

### 4008/4018 IP and 4019 Phones

For the low end IP & digital market



4018/4019



4008

Character display, loudspeaker, mute key

# WIRELESS PHONES

## DECT Handsets

For mobile communication within the company in IP and digital mode



Business 8242  
DECT Handset



Business 8232  
DECT Handset



Industrial 500EX  
DECT Handset



Industrial 8262\*  
DECT Handset

### Business 8242 DECT Handset

- Rich business telephony
- Large screen, Color display
- Headset Connector
- Bluetooth support
- Red Emergency key
- Live, Event keys, Alarm status
- Get Call Feature

### Business 8232 DECT Handset

- Rich business telephony
- Color display
- Headset connector
- Mini-USB port on the charging cradle
- Alarms Notifications
- Get Call Feature

### Industrial 500EX DECT Handset

- For hazardous work environments where there is a risk of explosion
- Bluetooth-capable
- IP54-compliant
- Isolated Worker Protection
- Alarm/locator function (alarm server required)

### Industrial 8262\* DECT Handset

- All capabilities of 8242 DECT Handset
- Bluetooth Low Energy (E-beacon) for location
- Ruggedized IP65, designed for industrial environment
- Isolated Worker Protection
- Man down, No Movement, Pull cord
- Alarm/locator function (alarm server required)

*\* Available in 2016*

## Voice over WLAN phones

Mobile voice communication over wireless LAN



### OmniTouch 8118 WLAN Handset

Black and white display, Vibrate mode, Headset connector, Get Call Feature



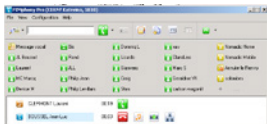
### OmniTouch 8128 WLAN Handset

All the 8118 features plus Push-to-talk feature, color display, Hands-free

# EFFICIENT COMMUNICATIONS

## Feature-rich applications for improved call-handling

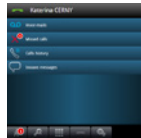
Communication solutions to increase productivity



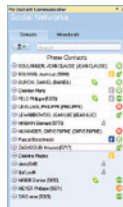
PIMphony



PIMphony Touch



My IC Web  
for Office



My IC Social  
Networks

### PIMphony and PIMphony Touch

- Personal communication manager
- Incoming and outgoing calls controlled from a Windows® PC client
- PIMphony for Windows 7 and Windows 8 laptop version, available in Basic, Pro, Team and Attendant versions and as a standalone IP softphone
- PIMphony Touch, for Windows tablet and PC application leveraging modern UI and Windows 8.1 capabilities, available with additional features such as: unified instant messaging, telephony presence

### My IC Web for Office

- A web-based solution for call handling, with a standard browser
- Any phone as an extension
- Optimal for use off-site or at home

### My IC Social Networks

- Federated user identify from different directories
- Presence federation based on telephony and Social medias
- Intelligent Microsoft Outlook® integration (unique interface)

### Professional Greeting: Customer welcome, call routing and automated attendant features

To increase in customer satisfaction

- Voicemail
- Personal Assistant: Automatic call routing defined by user
- Greeting messages: Up to four customizable company greetings
- PC-based and Phone Attendant console
- Automated Attendant (AA): Global solution for company welcome
- Multiple Level AA: Global solution for company welcome for multi-brand/multi-language companies and advanced AA needs
- Smart Call Routing: with 10.000 entries or Contact Center
- Call Center Office: automatic call routing with PC applications to support call handling (Agent Assistant, Supervisor Console, Statistic Manager) with up to 8 groups and 32 active agents

# POWERFUL EXTERNAL MOBILITY

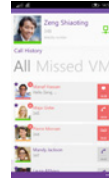
One phone, one number and one voice mail, on-site or off-site to keep you connected to your business anytime, anywhere



OTCV iPhone



OTCV Android



OTCV Windows

## One-number services

- Make any mobile phone an office extension
- Improve accessibility through a single business number

## OpenTouch Conversation<sup>®</sup> for iPhone<sup>®</sup>

- Free of charge client to download from App Store<sup>SM</sup>, software licence needed on OmniPCX Office RCE

## OpenTouch Conversation for Android<sup>™</sup>

- Free of charge client to download from Google Play<sup>™</sup> Store, software licence needed on OmniPCX Office RCE

## OpenTouch Conversation for Windows Phone<sup>®</sup>

- Free of charge client to download from Windows Store, software licence needed on OmniPCX Office RCE

	OTCV IPHONE	OTCV ANDROID	OTCV WINDOWS
Routing Rules, Mobility Management	X	X	X
In conversation services, Transfer	X	X	X
Conference	X	X	X
Forward options: forward, redirect	X	X	X
Call logs	X	X	X
Visual voice mail	X	X	X
Unified Instant Messaging	X	X	X
Unified Directory Access, Dial-by-name	X	X	X
Favorites	-	X	X
Telephony Presence	-	-	X
Get Call Feature	X	X	X
SIP Companion in VoIP mode to leverage company Wi-Fi <sup>®</sup> for both voice and data	X	X	-
Easy VPN (use Mobile as VPN client)	X	X	-

# NETWORK INFRASTRUCTURE

## LAN infrastructure

Cost savings with a single infrastructure for integrated voice/data services with or without Power Over Ethernet (PoE)



### OmniSwitch® 6250

- Fast Ethernet switch (10/100MB)
- 24 and 48 ports



### OmniSwitch 6350

- Ideal for SMB environments
- Gigabit Ethernet switch (10/100/1000MB)
- 24 and 48 ports with/without PoE

- 24 ports, fanless, (no PoE)
- Excellent for WLAN and IP Telephony solutions (PoE version)



### OmniSwitch 6450

- Gigabit Ethernet switch (10/100/1000MB)
- 24 and 48 ports with/without PoE (upgrade possible from 1GB to 10GB)
- 10 ports, fanless, with PoE
- Excellent for WLAN and IP Telephony solutions

## WLAN infrastructure

Cost savings with a single infrastructure for integrated voice/data/WLAN (Wi-Fi) services (when coupled with LAN infrastructure products)



### OmniAccess® 4005 WLAN-Switch

- WLAN Controller powered by PoE/PoE+ (optional DC power accessory available), support up to 16 access points
- Support Branch offices (RAP AP) and home users (RAP AP)

- OA RAP-108/109 provide IEEE 802.11a/b/g/n, 2x2:2, dual radio support



### OmniAccess RAP-3WN(P), RAP 108/109

- Single radio (RAP-3WN) and Dual radio (RAP 108/109)
- For the home office and external Extensions
- RAP3WN/RAP3WNP provide IEEE 802.11 b/g/n, 2x2 single radio support (WNP version provides PoE on one port)

### Wi-Fi access points

- OmniAccess AP103, IAP103 with 802.11n standard: IEEE 802.3af Power over Ethernet (PoE) sourcing supporting IEEE 802.11a/b/g/n
- OmniAccess AP205/205H, IAP205/205H with 802.11ac standard: IEEE 802.3af Power over Ethernet (PoE) sourcing and IEEE 802.11a/b/g/n/ac
- OmniAccess Outdoor AP275, IAP275 with ac standard: IEEE 802.3af Power over Ethernet (PoE) sourcing supporting IEEE 802.11a/b/g/n

## DECT infrastructure

Best of voice services for on-site mobility



### 4070 - Radio Base Station

- Indoor / Outdoor DECT radio base station
- Support of all DECT ranges



### 8340 & 8340-C SMART IP-DECT Access Point

- IP connectivity - PoE 802.3af
- Support of DECT and GAP devices

Contact your Alcatel-Lucent  
reseller to find out more about  
OpenTouch® Suite for SMB.